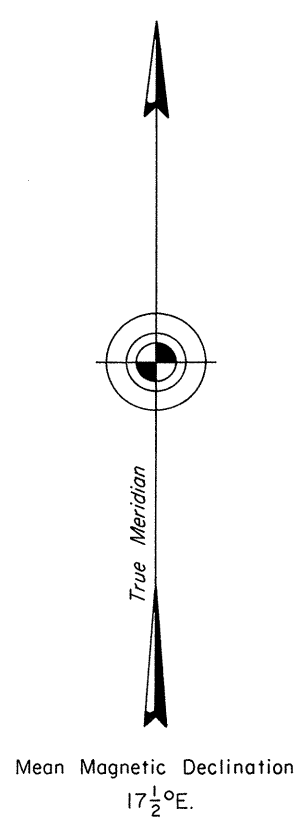
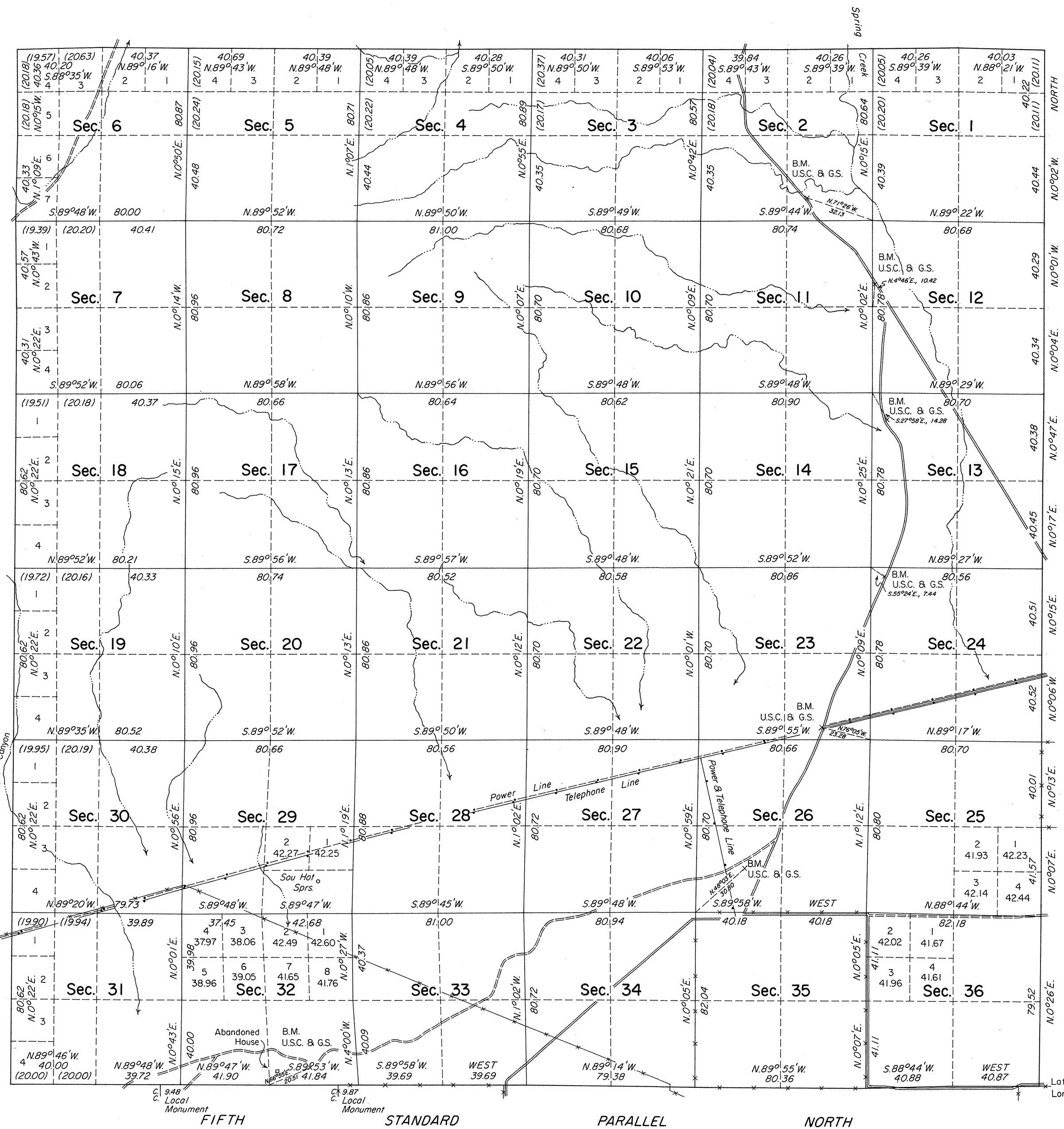


TOWNSHIP 26 NORTH, RANGE 38 EAST, OF THE MOUNT DIABLO MERIDIAN, NEVADA

DEPENDENT RESURVEY

NEVADA STATE OFFICE
RENO, NEVADA

OFFICIALLY FILED
NEVADA STATE OFFICE
10:00 A.M., May 25, 1977



A history of surveys is contained in the field notes.

This plat represents a dependent resurvey of the Fifth Standard Parallel North, through R. 38 E., and the east, west and north boundaries and the subdivisional lines of T. 26 N., R. 38 E., designed to restore the corners in their true original locations according to the best available evidence.

The lottings and areas, except as shown hereon, are as shown on the plat approved January 29, 1883.

This survey was executed by Duane R. Garoutte, Cadastral Surveyor, August 2 to October 8, 1974, under Special Instructions dated July 19, 1974, and Supplemental Special Instructions dated August 20, 1974, for Group No. 514, Nevada.

UNITED STATES DEPARTMENT OF THE INTERIOR
BUREAU OF LAND MANAGEMENT
Washington, D.C. May 11, 1977

This plat is strictly conformable to the approved field notes, and the survey, having been correctly executed in accordance with the requirements of law and the regulations of this Bureau is hereby accepted.

For the Director

Roger T. Barron
Acting Chief, Division of Cadastral Survey

Latitude 40°04'17.6" N.
Longitude 117°38'38.0" W.

