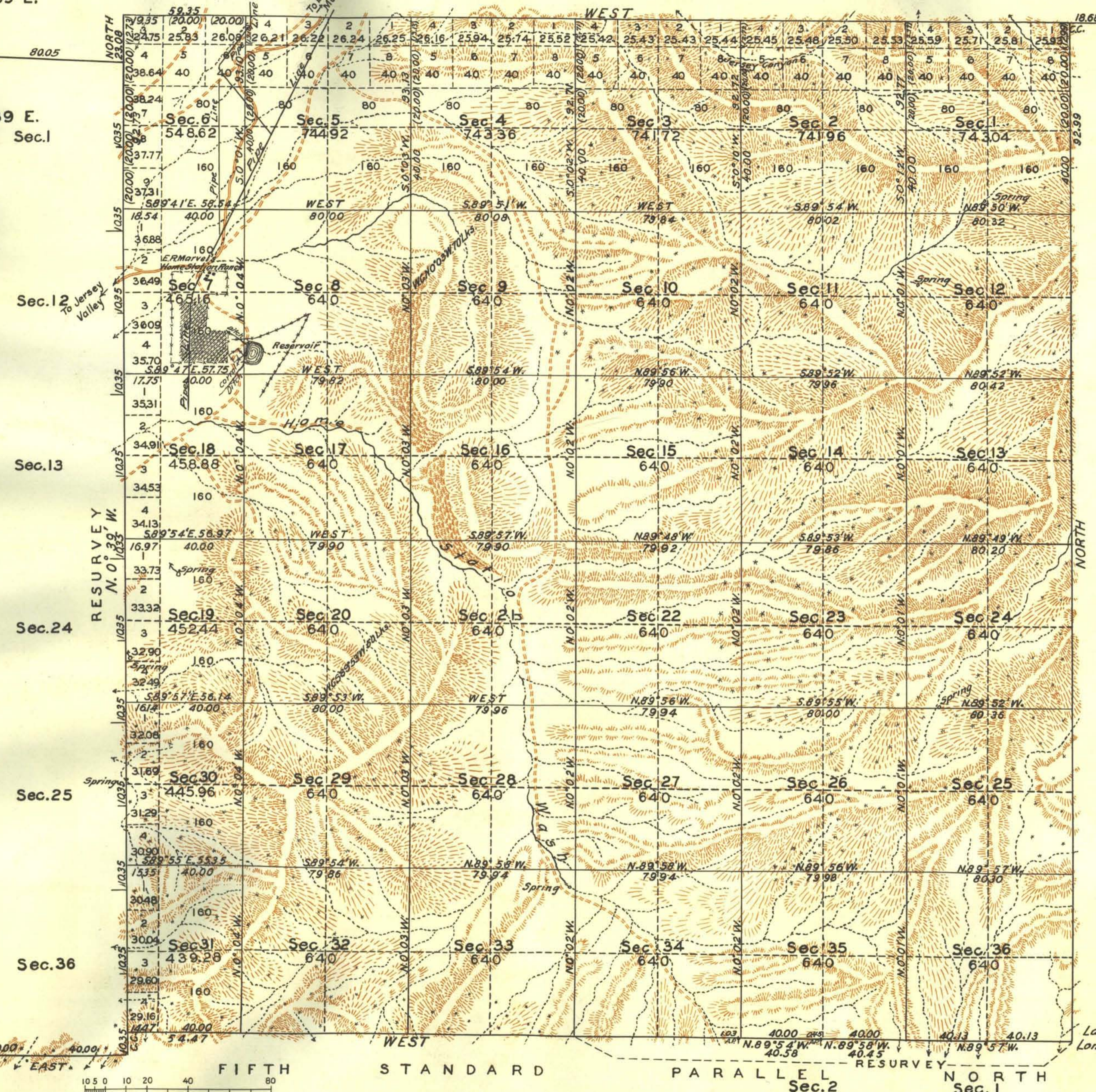


# TOWNSHIP NO 26 NORTH RANGE NO 40 EAST MOUNT DIABLO MERIDIAN NEVADA

Sec.36  
T.27 N., R.39 E.

T.26 N., R.39 E.  
Sec.1



Mean Magnetic Declination, Scale: 40 Chains to an Inch. Area Surveyed, 22525.34 Acres.

LINES DESIGNATED	BY WHOM SURVEYED	NO	GROUP DATE	MILEAGE MLS. CHS.	WHEN SURVEYED: BEGUN	COMPLETED
Exterior	GEORGE W. RIDGWAY	113	SEPT. 22, 1923	24 79.80	SEPT. 27, 1928	OCT. 24, 1928
Subdivisional	" " "	"	" " "	59 29.60	OCT. 24, 1928	NOV. 25, 1928
Meander	" " "	"	" " "			
Miscellaneous	" " "	"	" " "			

Office of U.S. Supervisor of Surveys  
Denver, Colorado, Feb. 24, 1930  
The above plat of Township No. 26 North Range No. 40 East of the Mount Diablo Meridian, Nevada is strictly conformable to the field notes of the survey thereof which have been examined and approved.

*Wm. H. Johnson*  
U.S. Supervisor of Surveys.

DEPARTMENT OF THE INTERIOR  
GENERAL LAND OFFICE  
Washington, D.C., March 29, 1930.  
The survey represented by this plat having been correctly executed in accordance with the requirements of law and the regulations of this office, is hereby accepted.

*Shore Howell*  
Assistant Commissioner.