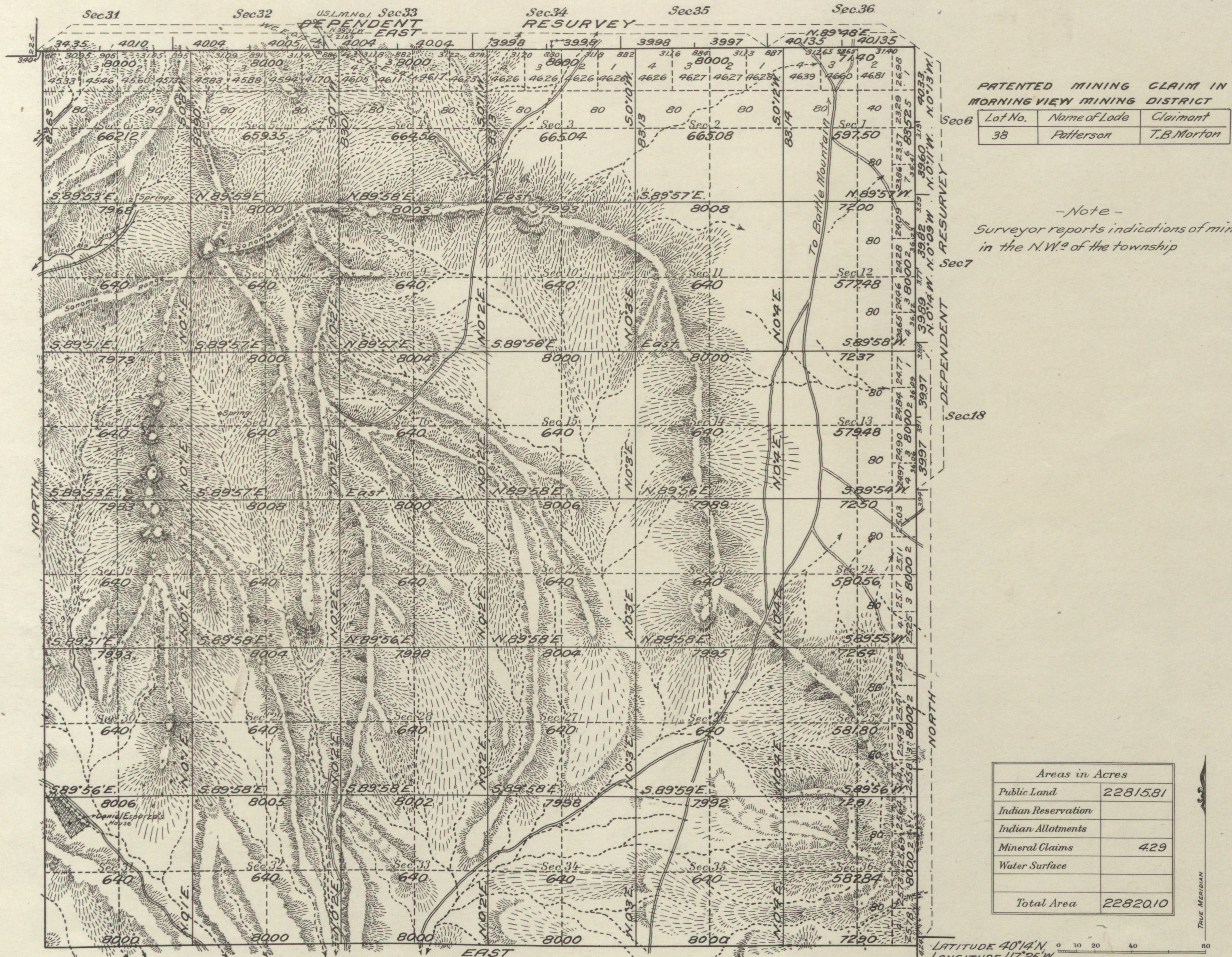


Accepted October 9, 1923

Township No 28 North Range No 40 East Mt Diablo Meridian, Nevada



PATENTED MINING CLAIM IN MORNING VIEW MINING DISTRICT

Lot No.	Name of Lode	Claimant
38	Patterson	T.B. Morton

- Note -  
Surveyor reports indications of mineral in the N.W. of the township

DUPLICATE PLAT  
The following annotations are not a part of this Plat

Received with Surveyor General's letter of June 5, 1923  
Posted in Div. 10 Dec. 22, 1923  
Vol. 53 p. 85  
Township Plat filed with R. and R.

Miscellaneous

Areas in Acres	
Public Land	22815.81
Indian Reservation	
Indian Allotments	
Mineral Claims	429
Water Surface	
<b>Total Area</b>	<b>22820.10</b>

LATITUDE 40°14'N  
LONGITUDE 117°25'W  
Scale 40 Chains to an inch  
Mean Magnetic Declination 18°25'E

Surveys Designated	By Whom Surveyed	Group		Amount of Surveys			When Surveyed	
		No.	Date	Mts.	chs.	fts.	Began	Completed
North Boundary Dep'ties	Emil Voigt U.S.	72	Feb 27, 1919	5	73	80	May 14, 1921	Aug 8, 1921
East Boundary Dep'ties	Cadastral Engineer			2	79	58	May 14, 1921	July 19, 1921
East Boundary	and Walter H. Good			3	03	94	May 12, 1921	July 19, 1921
South Boundary	U.S. Transitman			5	72	90	May 11, 1921	July 18, 1921
Subdivisions				59	56	95	May 13, 1921	Aug 6, 1921

The above map of Township No. 28 North Range No. 40 East of the Mt. Diablo Meridian, Nevada is strictly conformable to the field notes of the survey thereof on file in this office, which have been examined and approved

U. S. Surveyor General's Office.  
Reno, Nevada June 5, 1923

*J. E. Belden*  
Surveyor General.