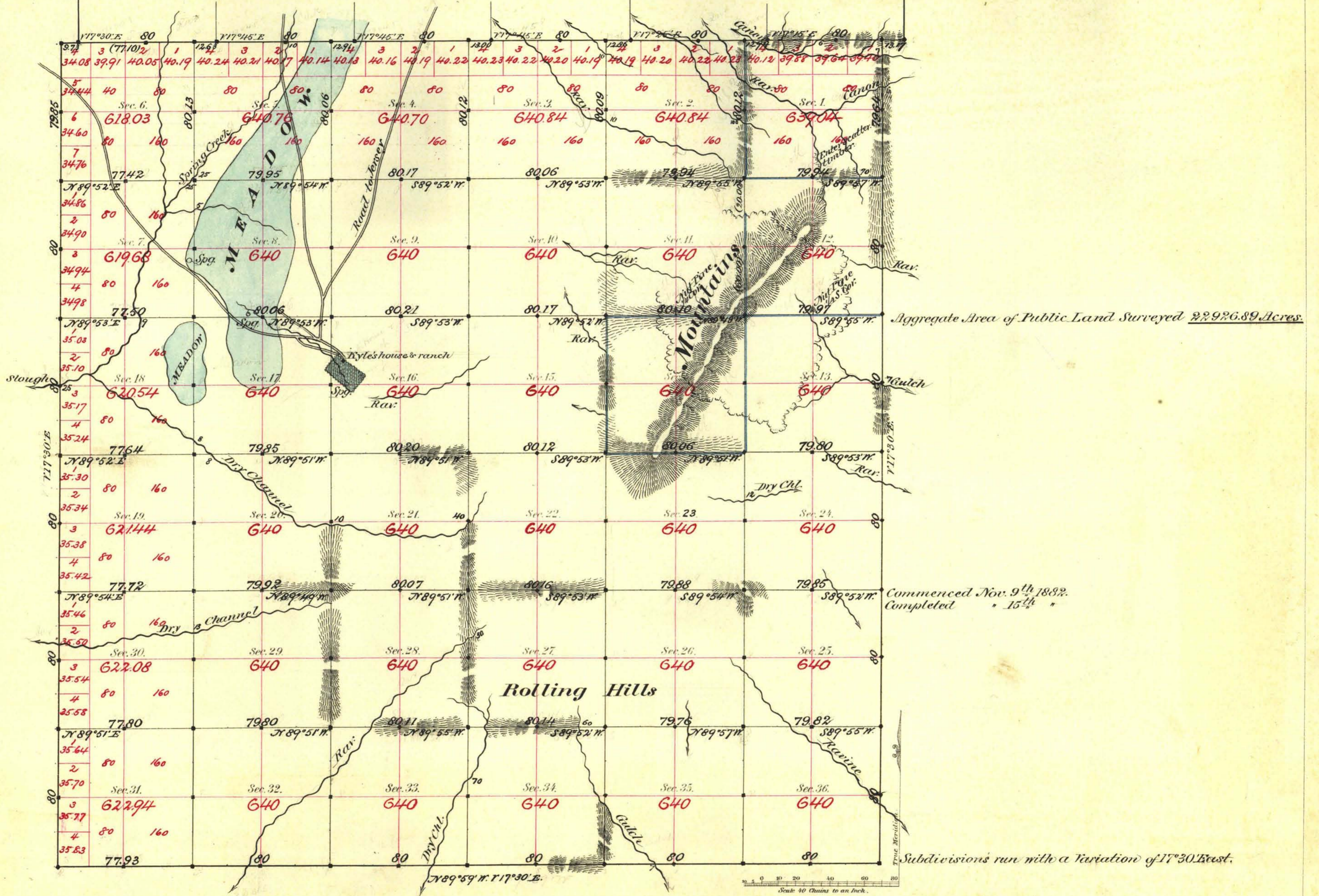


TOWNSHIP N^o 25 NORTH RANGE N^o 39 EAST MOUNT DIABLO MERIDIAN



Surveys Designated	By Whom Surveyed	Date of Contract	Amount of Surveys	When Surveyed
Township lines	Conkling & Stewart	Nov. 14 th 1881	23 - 47 - 142	1881
Subdiv ^{ns} black	E. L. Bridges	July 29 th 1882	52 - 08 - 52	Nov. 1882
blue	"	"	7 - 60 - 19	"
Convergency	"	"	64 - 34	"

262 Cor.

132

156

"

The above Map of Township N^o 25 North of Range N^o 39 East of Mt. Diablo Meridian is strictly conformable to the field notes of the survey thereof on file in this Office, which have been examined and approved.

Surveyor General's Office,
Reno, Nevada

E. J. Davis
Sur. Gen. Nevada

January 29th 1883

102