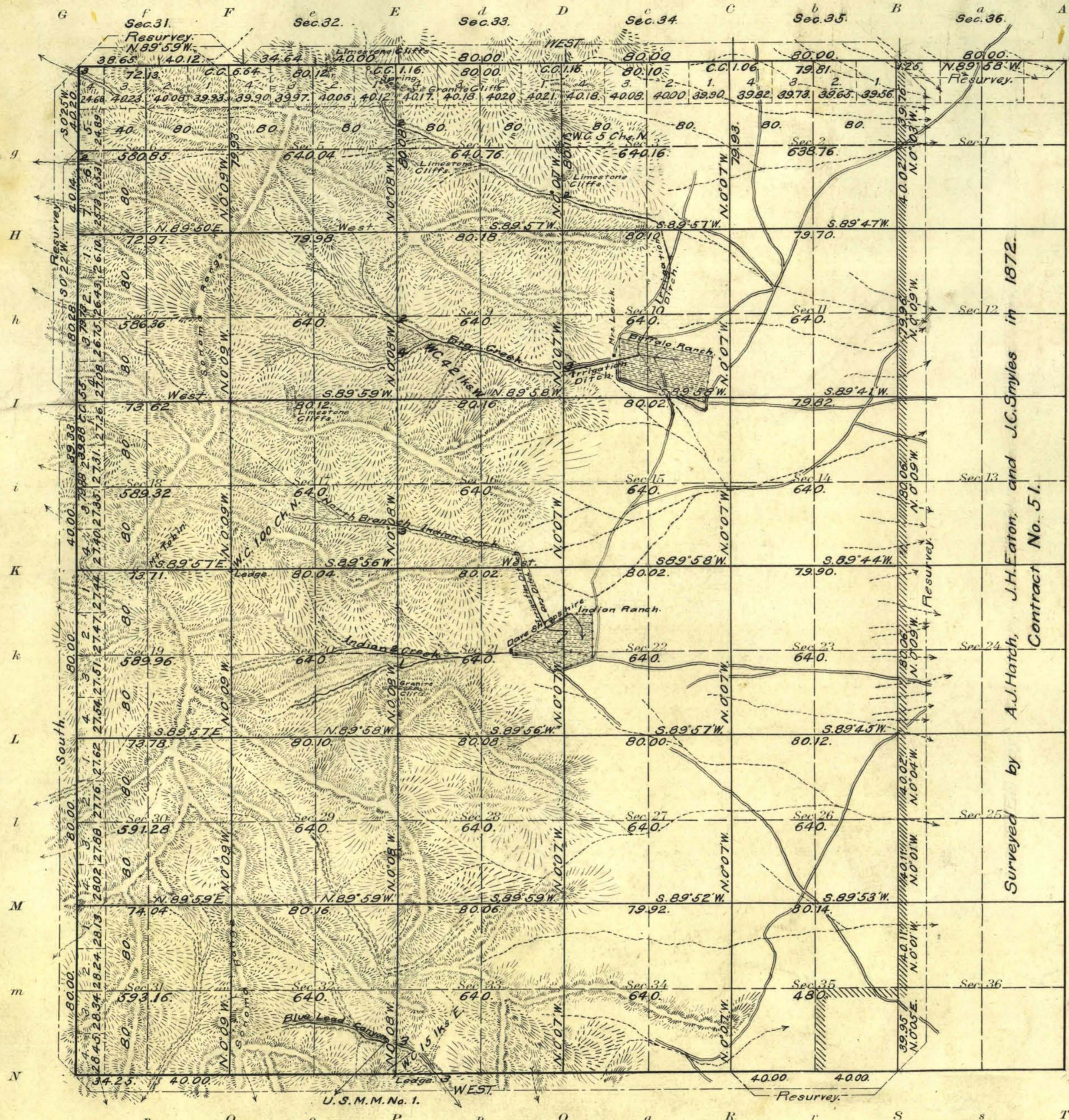


Township N<sup>o</sup> 29 North, Range N<sup>o</sup> 40 East Mt Diablo Meridian, Nevada.



Surveyor reports indications of mineral in Secs. 32 & 33.

Surveyed by A.J. Hatch, J.H. Eaton, and J.C. Smyles in 1872.  
Contract No. 51.

Areas in Acres	
Public Land	18,730.65
Indian Reservation	
Indian Allotments	
Mineral Claims	
Water Surface	
<b>Total Area</b>	<b>18,730.65</b>

Lat., 40° 20' N.  
Long., 117° 25' W.  
Scale 40 Chains to an inch  
Mean Magnetic Declination 18° 00' E.

Surveys Designated	By Whom Surveyed	Group	Amount of Surveys		When Surveyed			
			No.	Dated Instructions	Mls. chs.	Uks.	Began	Completed
S. Bdy. T. 30 N., R. 40 E. Res.	H.W. Reppert	30	April 25, 1914	1	78	77	Aug. 14, 1914	Aug. 31, 1914
S. Bdy. T. 30 N., R. 40 E.	A.T. Harris	"	" " " "	3	74	64	Aug. 17, 1914	Aug. 18, 1914
W. Bdy. Res.	H.W. Reppert	"	" " " "	2	00	62	Aug. 20, 1914	Aug. 20, 1914
W. Bdy.	A.T. Harris	"	" " " "	3	79	33	Aug. 24, 1914	Aug. 25, 1914
S. Bdy. Res.	A.T. Harris	"	" " " "	1	00	00	Aug. 14, 1914	Aug. 14, 1914
S. Bdy.	A.T. Harris	"	" " " "	3	74	26	Aug. 14, 1914	Aug. 25, 1914
Subdivision Res.	H.W. Reppert & A.T. Harris	"	" " " "	6	00	05	Aug. 14, 1914	Aug. 17, 1914
Subdivision.	A.T. Harris	"	" " " "	48	48	31	Aug. 17, 1914	Aug. 31, 1914

The above map of Township No. 29 N., Range No. 40 E. of the Mt. Diablo Meridian Nevada is strictly conformable to the field notes of the survey thereof on file in this office, which have been examined and approved  
U. S. Surveyor General's Office.  
Reno, Nevada, August 3, 1916.

*John B. Sullivan*  
Surveyor General.

N.E.P.