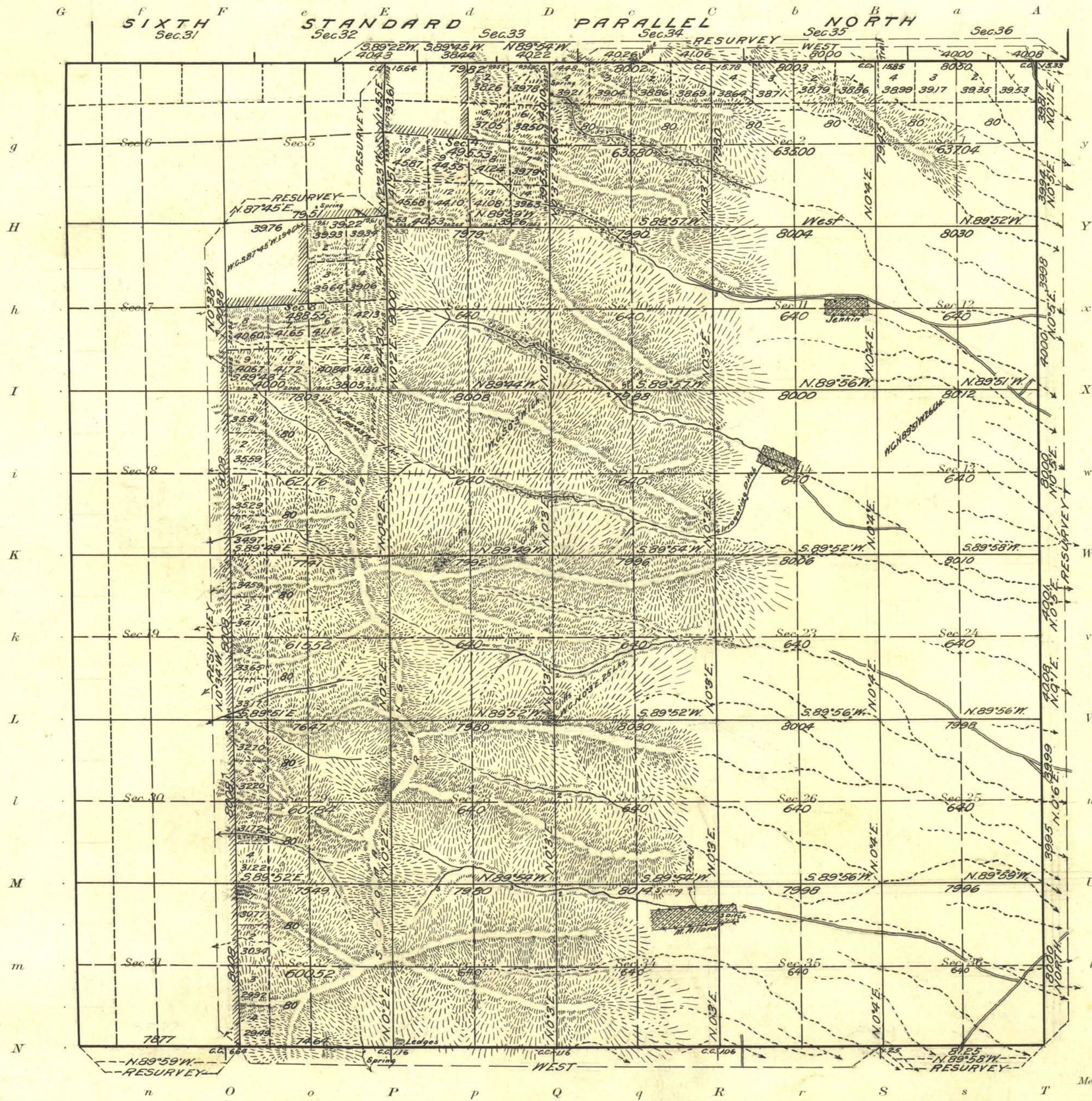


Township No 30 North Range No 40 East Mt. Diablo Meridian, Nevada



Areas in Acres	
Public Land	18137.56
Indian Reservation	
Indian Allotments	
Mineral Claims	
Water Surface	
Total Area	18137.56

Scale 40 Chains to an inch
 Mean Magnetic Declination 18°15'E.
 Latitude 40°25'N.
 Longitude 117°24'W.

Surveys Designated	By Whom Surveyed	Group No.	Date of Instructions	Amount of Surveys		When Surveyed		
				Mls.	chs.	Begun	Completed	
Sixth St. Par. N. Res.	H.W. Reppert	30	April 25, 1914	4	40	49	Sept. 3, 1914	Sept. 7, 1914
East Boundary Res.	"	"	"	5	79	76	Aug. 15, 1914	Sept. 2, 1914
South Boundary Res.	H.W. Reppert and A.T. Harris	"	"	2	00	02	Aug. 14, 1914	Aug. 3, 1914
South Boundary	H.W. Reppert	"	"	3	73	39	Aug. 17, 1914	Aug. 18, 1914
Subdivision Res.	H.W. Reppert and A.T. Harris	"	"	6	75	33	Sept. 3, 1914	Sept. 10, 1914
Subdivision	H.W. Reppert, A.T. Harris and Spec. Agents	"	"	46	70	25	Sept. 4, 1914	Sept. 21, 1914

The above map of Township No. 30 North Range No. 40 East of the Mt. Diablo Meridian Nevada is strictly conformable to the field notes of the survey thereof on file in this office, which have been examined and approved.

U. S. Surveyor General's Office.
 Reno, Nevada, August 3, 1916.

John B. Sullivan
 Surveyor General.